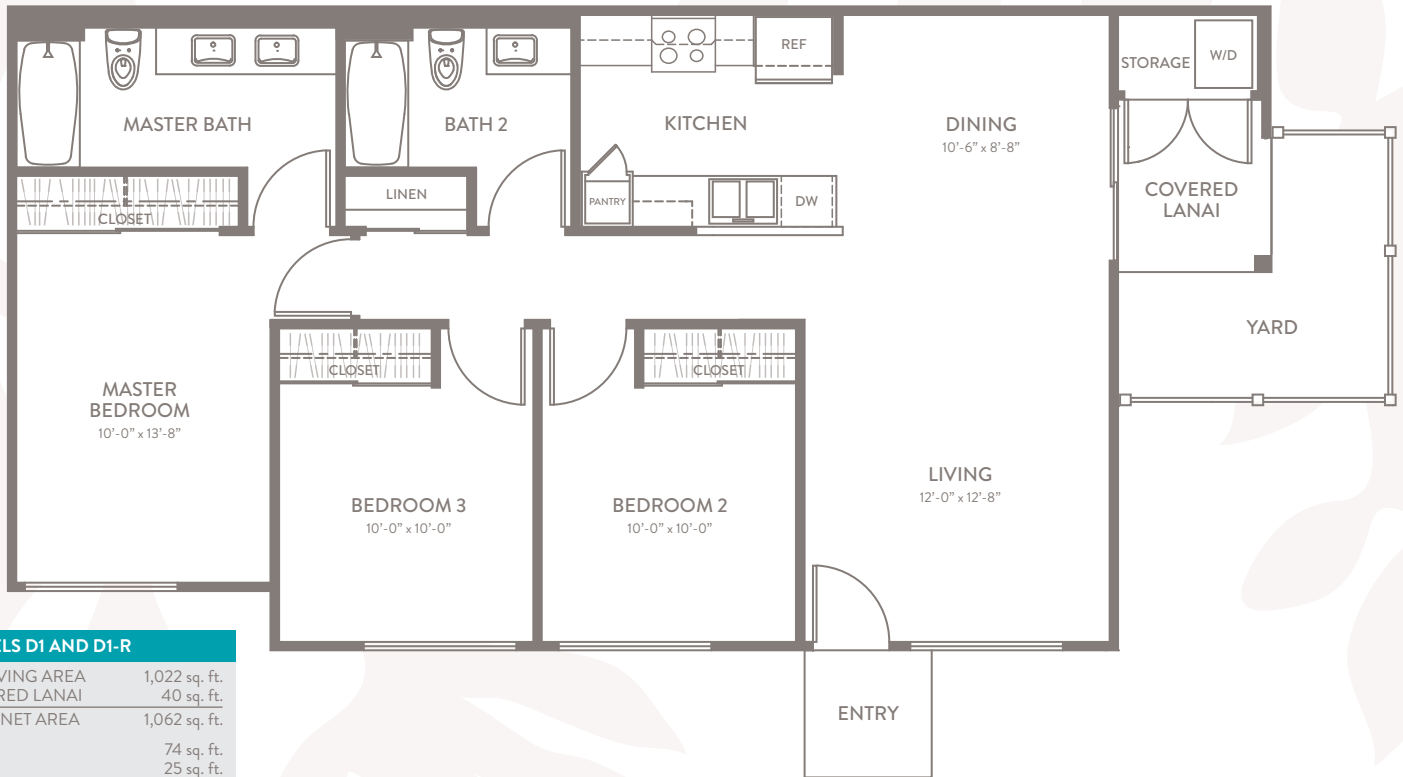




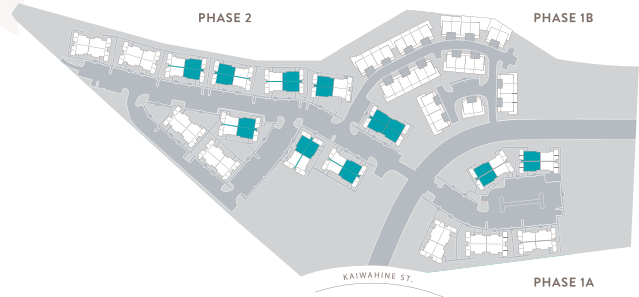
MODEL D1 - GROUND FLOOR

3 BEDROOMS - 2 BATHS



MODELS D1 AND D1-R

NET LIVING AREA	1,022 sq. ft.
COVERED LANAI	40 sq. ft.
TOTAL NET AREA	1,062 sq. ft.
YARD	74 sq. ft.
ENTRY	25 sq. ft.



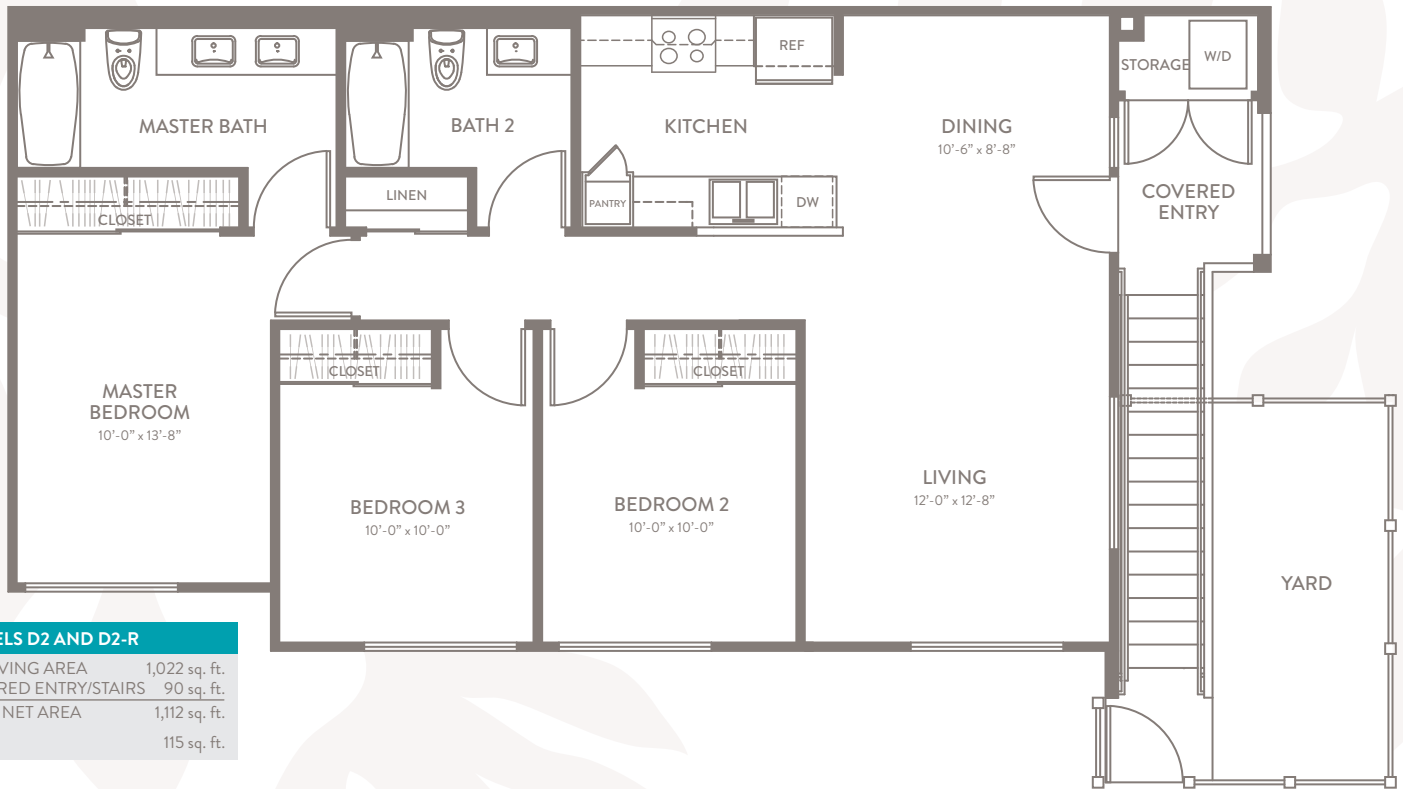
KAMALANILIVING.COM | EMAIL: INFO@KAMALANILIVING.COM
KAMALANI SALES: KW ISLAND LIVING • 285 W. KAAHUMANU AVE., STE. 201 • KAHULUI, HI 96732

DISCLAIMER: The plans and the map on this page are for illustration only. The developer disclaims any warranty or promise about the size, layout, specifications, and locations of units, amenities, and fixtures shown on this page. The developer reserves the right to substitute appliances, fixtures, amenities, hardware, and other similar items with items of substantially equal quality and utility. The developer is not building any unit to the precise specifications or design of any rendering shown on this page. The specific features in a unit and the actual room and space measurements may vary from unit to unit and the developer is not required to deliver a unit in exact accordance with the floor plan so depicted. The area, location, and configuration of the unit are based on estimates only and may change from that shown on this page when the developer completes construction according to its approved construction drawings. The lot areas and configurations, locations and boundary lines shown on the map and renderings are general estimates only and have not been confirmed with a professional surveyor or engineer. The developer makes no representations, and expressly disclaims that they are accurately shown or to scale or proportion, or that all of the subdivided lots in the map are depicted. The map and renderings are preliminary and developer has not finalized development plans for or commenced construction of the project improvements. As such, the map does not reflect the final plans for the phases or the project. The lot sizes and configurations and the number, types, design, layout and locations of the roads, landscaping, common area and buildings in the project, and the number and sizes of the increments and phases are subject to change.



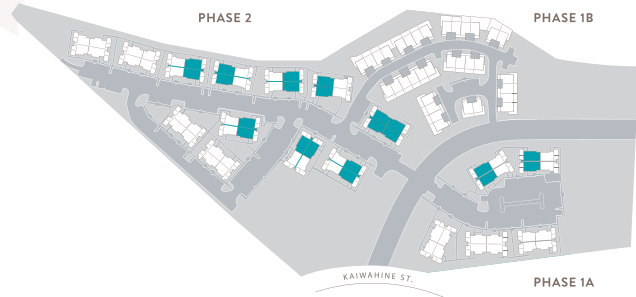
MODEL D2 - SECOND FLOOR

3 BEDROOMS - 2 BATHS



MODELS D2 AND D2-R

NET LIVING AREA	1,022 sq. ft.
COVERED ENTRY/STAIRS	90 sq. ft.
TOTAL NET AREA	1,112 sq. ft.
YARD	115 sq. ft.



KAMALANILIVING.COM | EMAIL: INFO@KAMALANILIVING.COM
KAMALANI SALES: KW ISLAND LIVING • 285 W. KAAHUMANU AVE., STE. 201 • KAHULUI, HI 96732



DISCLAIMER: The plans and the map on this page are for illustration only. The developer disclaims any warranty or promise about the size, layout, specifications, and locations of units, amenities, and fixtures shown on this page. The developer reserves the right to substitute appliances, fixtures, amenities, hardware, and other similar items with items of substantially equal quality and utility. The developer is not building any unit to the precise specifications or design of any rendering shown on this page. The specific features in a unit and the actual room and space measurements may vary from unit to unit and the developer is not required to deliver a unit in exact accordance with the floor plan so depicted. The area, location, and configuration of the unit are based on estimates only and may change from that shown on this page when the developer completes construction according to its approved construction drawings. The lot areas and configurations, locations and boundary lines shown on the map and renderings are general estimates only and have not been confirmed with a professional surveyor or engineer. The developer makes no representations, and expressly disclaims that they are accurately shown or to scale or proportion, or that all of the subdivided lots in the map are depicted. The map and renderings are preliminary and developer has not finalized development plans for or commenced construction of the project improvements. As such, the map does not reflect the final plans for the phases or the project. The lot sizes and configurations and the number, types, design, layout and locations of the roads, landscaping, common area and buildings in the project, and the number and sizes of the increments and phases are subject to change.